

Chong Lee Leong Seng was established in 1959 to distribute Yanmar Diesel engines and a range of related products in Singapore and Malaysia.

The company has expanded its range of products and is presently representing more than 30 Japanese, Korean, American and European brand names across East Asia.

Our marine equipment includes YANMAR Main Propulsion and Auxiliary engines; TAIKO KIKAI Oily Water Separator, Cargo Pumps, Engine Room Pumps; Sewage Treatment Plant; KASHIWA Fire Fighting Equipment, NAKASHIMA Side Thruster, Propellers and Shafting System.



Sewage Treatment Device



Centrifugal Pump



Gear Cargo Pump



Two Screw Pump



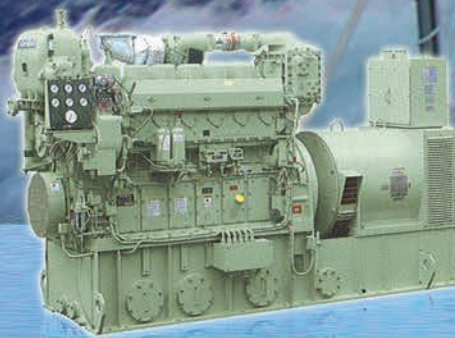
Three Screw Pump



Gear Pump



15ppm Bilge Separator



Main Generator



Main Propulsion Engine



**YANMAR**



Fire Fighting System



**KASHIWA**



Propeller



Thruster



Chong Lee Leong Seng Co Ltd.

23 Tuas Avenue 2, Singapore 639454. Tel: (65) 6264 2922 Fax: (65) 6264 0202



## Chong Lee Leong Seng Co., Ltd

23 Tuas Avenue 2, Singapore 639454

Tel (65) 6264 2922 Fax (65) 6264 0202, 6861 8785

### Background

Chong Lee Leong Seng was established in 1959 to distribute Yanmar Diesel engines and a range of related products in Singapore and Malaysia. The company has expanded its range of products and is presently representing more than 30 Japanese, Korean, American and European brand names across East Asia. Emerging as a new breed of Asian entrepreneur, CLLS set up overseas operations and formed strategic alliances with foreign partners. With its headquarters in Singapore, and more than 30 legal entities to manage its business, the CLLS Group operates across Malaysia, Indonesia, Hong Kong, China, Taiwan, Philippines and the Indo-China region.

### Nature of Business

Sales, marketing and distribution of Marine, Industrial, Construction and Agriculture machinery and equipment. We represent only products manufactured by market leaders of their industry. Our marine equipment includes YANMAR Main Propulsion and Auxiliary Engines; TAIKO KIKAI Oily Water Separator, Cargo Pumps, Sewage Treatment Plants, Engine Room Pumps; KASHIWA Fire Fighting Equipment, Deck Foam System; NAKASHIMA Side Truster, Propellers and Shafting System.

### Facilities & Capabilities

The factory is equipped with one 5-tonne, two 20-tonne and one 30-tonne overhead cranes. The modern test cell comes with a control room which can test up to 4 generator sets at a time and with load bank capacity of 4 megawatts.

In order to cater to the needs of our customers and subsidiaries in Malaysia, Hong Kong, Taiwan, China, Indonesia, Thailand, Vietnam, Myanmar, Cambodia and the Philippines, our warehouse, being a well-stocked distribution centre for our industrial products and spare parts, is well equipped to serve the Asian region.

### Customer Service And Support

Our qualified Sales team provides expert advice on product applications and cost effectiveness. Besides providing excellent after-sales service, our well trained service team supervises installations and commissioning of equipment as well.

### Contacts

Marine

Email: [marine@clls.com.sg](mailto:marine@clls.com.sg)

Marine Department

General Manager

Mr Arthur Lim

Tel: +65 6860 1923

Mobile: +65 9662 5074

Email: [shlim@clls.com.sg](mailto:shlim@clls.com.sg)

Marketing Executive

Ms Eileen Phua

Tel: +65 6860 1935

Mobile: +65 9664 9723

Email: [slphua@clls.com.sg](mailto:slphua@clls.com.sg)

Senior Sales Manager

Ms Kristine Lim

Tel: +65 6860 1924

Mobile: +65 9690 0665

Email: [kristine@clls.com.sg](mailto:kristine@clls.com.sg)